



**Essential Tools
Master Index**

SEPTEMBER 2013

Table of Contents

Part Number References	2
Drawer Liner References	5-8

Part Number Reference

TOOL #	TOOL DESCRIPTION	DRAWER #	TOOL #	TOOL DESCRIPTION	DRAWER #
14513	CAP SCREW USED WITH MD998742-01	2	MB991548-01	PUMP ADAPTER	6
J-44372	5-60 LB PULL GAUGE	4	MB991549-01	HOSE ADAPTER	6
MB990031-01	DRIVE PINION OIL SEAL INSTALLER	3	MB991559-01	OIL SEAL INSTALLER	1
MB990211-01	SLIDE HAMMER WITH ADAPTER KIT	4	MB991628-01	SPRING COMPRESSOR	5
MB990211-2-01	ADAPTER COMPONENT OF MB990211-01 KIT	4	MB991629-01	SPRING COMPRESSOR	5
MB990228-01	PRELOAD SOCKET	3	MB991630-01	CLUTCH SPRING COMPRESSOR	6
MB990339-01	PINION/ CARRIER BRNG PULLER SET	5	MB991631-01	CLEARANCE DUMMY PLATE	7
MB990392-01	GAUGE TUBE	4	MB991632-01	CLEARANCE DUMMY PLATE	7
MB990607-01	TORQUE WRENCH SOCKET	2	MB991633-01	BAND ADJUSTER TOOL SET	6
MB990662-01	OIL PRESSURE GAUGE KIT	7	MB991636-01	REDUCTION BRAKE ADJUSTER - STOPPER	1
MB990662-1-01	FITTING, COMPONENT OF MB990662-01	3	MB991705-01	ADAPTER TEST FITTING	1
MB990662-2-01	FITTING, COMPONENT OF MB990662-01	3	MB991709-01	AFS HARNESS	IN SHOP
MB990767-01	END YOKE HOLDER	4	MB991714-01	BRAKE BOOSTER TOOL	4
MB990776-01	FRONT AXLE BASE	4	MB991789-01	SPRING COMPRESSOR	6
MB990779-01	BAR, INSTALLATION OF DIFFERENTIAL SIDE BEARING OUTER RACE	1	MB991790-01	SPRING COMPRESSOR - MEASUREMENT OF REVERSE CLUTCH END PLAY	5
MB990799-01	AXLE BEARING REMOVER/INSTALLER	3	MB991833-01	DRIVESHAFT PULLER	4
MB990800	BALL JOINT DUST COVER INSTALLER	4	MB991865	DUMMY RESISTOR (PUT INTO MIT10004)	IN SHOP
MB990887-01	TRANSFER CASE SEAL INSTALLER RING	5	MB991866	RESISTOR HARNESS (PUT INTO MIT10004)	IN SHOP
MB990889	REAR SUSPENSION BUSHING RING	4	MB991884	RESISTOR HARNESS (PUT INTO MIT10004)	IN SHOP
MB990891-01	INSTALLER BASE	5	MB991956-01	ENGINE HANGER	2
MB990938-01	HANDLE	3	MB991963	SUSPENSION BUSHING ARBOR	4
MB990941-01	TORQUE TUBE BEARING INSTALLER	3	MB991999-01	VALVE STEM SEAL INSTALLER	1
MB990947-01	DRIVER GUIDE	1	MB992012-01	ENGINE HANGER PLATE (A)	2
MB990955A-01	OIL SEAL INSTALLER	4	MB992013-01	ENGINE HANGER PLATE (B)	2
MB990993-01	OIL PRESSURE GAUGE ADAPTER	6	MB992018-01	OIL PRESSURE JOINT	5
MB990994-01	OIL PRESSURE GAUGE ADAPTER	6	MB992037-01	INPUT SHAFT OIL SEAL INSTALLER	3
MB990998-01	FRONT HUB REMOVER/INSTALLER	4	MB992038-01	PRELOAD SOCKET	3
MB991015-01	FRONT HUB OIL SEAL INSTALLER	4	MB992039-01	SLIDE HAMMER PULLER	3
MB991056-01	KNUCKLE ARM BRIDGE	4	MB992042-01	ENGINE COOLANT TEMPERATURE SENSOR WRENCH	1
MB991115-01	OIL SEAL INSTALLER	4	MB992049-01	FUEL PRESSURE CHECK TEE	5
MB991146-01	CAMSHAFT DOWEL PIN INSTALLER	2	MB992050	DELTA GLASS ADJUST BLOCK SET	4
MB991168-01	DIFFERENTIAL SEAL INSTALLER	3	MB992053	DOOR GLASS ADJUST BLOCK SET (BLACK/ PS24)	4
MB991244-01	TRUNK LID TORSION BAR REMOVER/REPLACER	4	MB992103-01	TIMING CHAIN WEDGE	1
MB991348-01	TEST HARNESS SET (PUT INTO MIT10004)	IN SHOP	MB992127-01	ADAPTER	3
MB991367-01	SPANNER WRENCH	4	MB992138-01	BEARING INSTALLER	3
MB991380-01	OIL SEAL INSTALLER	4	MB992139-01	SPRING COMPRESSOR KIT	6
MB991445-01	BUSH REMOVER & INSTALLER BASE	6	MB992139-01-1	COMPONENT OF MB992139-01	6
MB991448-01	BUSH REMOVER & INSTALLER BASE	4	MB992139-01-2	COMPONENT OF MB992139-01	6
MB991480-01	FUEL TANK LOCK RING WRENCH	2	MB992140-01	OIL SEAL INSTALLER	3

Part Number Reference

TOOL #	TOOL DESCRIPTION	DRAWER #	TOOL #	TOOL DESCRIPTION	DRAWER #
MB992141-01	OIL SEAL INSTALLER	3	MD998334-01	OIL PUMP OIL SEAL INSTALLER	3
MB992164	DOOR GLASS ADJUST BLOCK SET (BLUE / PS28)	4	MD998350-01	BEARING INSTALLER	6
MB992183-01	INSTALLER,CK/SHAFT RR OIL SEAL	1	MD998364-01	CAMSHAFT OIL SEAL INSTALLER	1
MB992195-01	SPRING COMPRESSOR	7	MD998371-01	BEARING PULLER ADAPTER	1
MB992197-01	AXLE OIL SEAL INSTALLER - DIFFERENTIAL	5	MD998372-01	INSTALLER, BEARING	1
MB992198-01	AXLE OIL SEAL INSTALLER	5	MD998373-01	SILENT SHAFT BEARING INSTALLER	1
MB992202-01	WRENCH, FUEL TANK	2	MD998374-01	BEARING INSTALLER STOP	1
MB992206-01	OIL SEAL INSTALLER	3	MD998375-01	CRANKSHAFT FRONT OIL SEAL INST.	1
MB992208-01	ENGINE HANGER PLATE	2	MD998376-01	CRANKSHAFT REAR OIL SEAL INST.	1
MB992210-01	OIL SEAL INSTALLER	3	MD998412	OIL PUMP GUIDE (PAIR)	1
MB992216-01	TRANSMISSION INSTALLER (5TH GEAR)	3	MD998443-01	AUTO-LASH ADJUSTER HOLDER	
MB992219-01	OUTPUT SHAFT ADAPTER	3	MD998474-01	PB TPS TEST HARNESS	IN SHOP
MB992220-01	INPUT SHAFT ADAPTER	3	MD998478-01	TPS TEST HARNESS(PUT IN MB991341C)	IN SHOP
MB992221-01	PULLER SET KIT	3	MD998713-01	CAMSHAFT OIL SEAL INSTALLER	1
MB992226	SERRATION SOCKET	1	MD998716-01	CRANKSHAFT WRENCH	1
MB992236-01	INSTALLER, CIRCLIP	4	MD998717-01	FRONT OIL SEAL INSTALLER	1
MB992272-01	BEARING INSTALLER	6	MD998718-01	CRANKSHAFT REAR OIL SEAL INST.	1
MB992275	INSTALLER, DRIVE BELT	1	MD998735-01	VALVE SPRING COMPRESSOR	6
MB992276	REMOVER, DRIVE BELT	1	MD998737-01	VALVE STEM SEAL INSTALLER	1
MB992310-01	INSTALLER, OIL SEAL	2	MD998738-01	SET SCREW	1
MB992311-01	GUIDE, OIL SEAL	2	MD998742-01	GAUGE ADAPTER	2
MB992312-01	INSTALLER, OIL SEAL	2	MD998752-01	PULLEY WRENCH	1
MB992313-01	INSTALLER, OIL SEAL	2	MD998773-01	KNOCK SENSOR SOCKET	1 & 2
MB992314-01	GUIDE, V RING	2	MD998774-01	VALVE STEM SEAL INSTALLER	1
MB992323-01	INSTALLER, SEAL COVER	2	MD998776-01	CRANKSHAFT REAR SEAL INSTALLER	1
MB992324-01	GUIDE A, SEAL COVER	2	MD998779-01	SILENT SHAFT HOLDING TOOL	1
MB992325-01	GUIDE B, SEAL COVER	2	MD998802-01	INPUT SHAFT HOLDER	3
MB992332-01	CLUTCH REMOVAL TOOL, TCSST	2	MD998807-01	ROLL PIN REMOVER	2
MB992853-01	ENGINE HANGER	2	MD998816-01	BEARING INSTALLER ADAPTER, 30MM	3
MB992854-01	MAGNETIC BASE PLATE	1	MD998817-01	BEARING INSTALLER ADAPTER, 34MM	3
MB992867-01	KNUCKLE ARM BRIDGE SPACER	4	MD998818-01	BEARING INSTALLER ADAPTER, 38MM	3
MB992873-01	SEAL INSTALLER	3	MD998820-01	INSTALLER ADAPTER, 42MM	3
MB992909-01	WRENCH, FUEL TANK (ADAPTER)	2	MD998821-01	BEARING INSTALLER ADAPTER, 44MM	3
MD998162-01	SPANNER	2	MD998822-01	BEARING INSTALLER	3
MD998245-01	LOCK PIN INSTALLER	1	MD998824-01	BEARING INSTALLER ADAPTER, 50MM	3
MD998285-01	OIL SEAL GUIDE	1	MD998829-01	BEARING INSTALLER	3
MD998323-01	BEARING INSTALLER	3	MD998834-01	SPECIAL SPANNER (50 MM OFFSET SOCKET)	5
MD998330-01	OIL PRESSURE GAUGE SET	7	MD998903	CLUTCH SPRING COMPRESSOR	2
MD998332-01	MIT211143 TRANS. PRESS. ADAPTER (PAIR)	5	MD998924-01	CL SPRING COMPRESSOR RETAINER	5
MD998333-01	OIL PUMP REMOVER (PAIR)	5	MD998924-A	BOLT	5

Part Number Reference

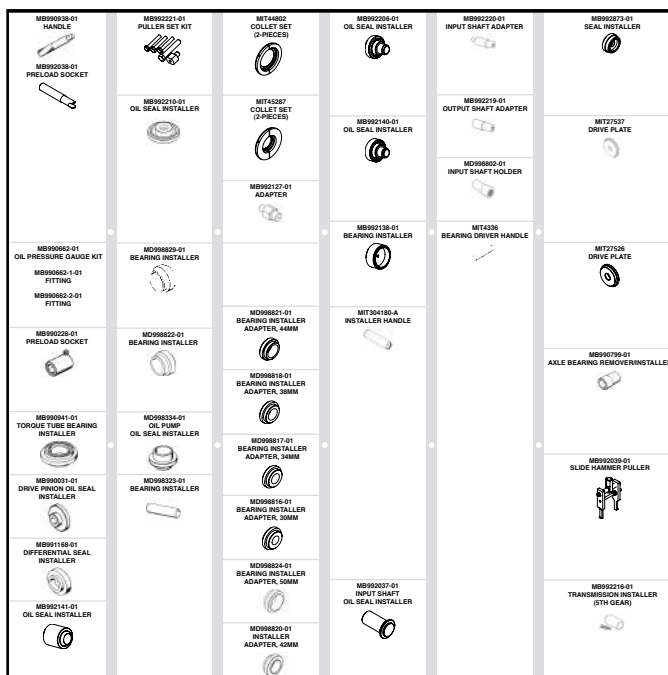
TOOL #	TOOL DESCRIPTION	DRAWER #	TOOL #	TOOL DESCRIPTION	DRAWER #
MD999577-01	CLUTCH SPRING COMPRESSOR	5			
MIT-EXP830	BATTERY TESTER (NEW)	IN SHOP			
MIT210196	FUEL PRESSURE GAUGE	7			
MIT215144	GAUGE ADAPTER	2			
MIT217212	PINS, 10MM SET	4			
MIT217213	PINS, 11MM SET	4			
MIT217214-1	EXTRACTOR SCREW SET	5			
MIT220432	AUTO TURNS OIL PRESSURE GAUGE ADAPTER	1			
MIT220433	FUEL PRESSURE TEST ADAPTER	6			
MIT27522	DRIVE PLATE	4			
MIT27526	DRIVE PLATE	3			
MIT27537	DRIVE PLATE	3			
MIT280220	EVAP EMISSION TESTER (MLR-6872A)	IN SHOP			
MIT304180-A	INSTALLER HANDLE	3			
MIT304204	DRAW BAR	1			
MIT304253	PRESSURE GAUGE (COMPONENT OF MB998330-01)	7			
MIT305302	PRESSURE GAUGE (COMPONENT OF MB998330-01)	7			
MIT305303	PRESSURE GAUGE (COMPONENT OF MB998330-01)	7			
MIT308239	CRANK/CAMSHAFT PULLEY HOLDER PIN	4			
MIT4336	BEARING DRIVER HANDLE	3			
MIT44802	COLLET SET	3			
MIT45287	COLLET SET	3			
MIT46716	TPMS MAGNET	1			
MIT47026	VALVE SPRING COMPRESSOR ADAPTER	1			
MIT47305	RF DETECTOR	IN SHOP			
MIT47446-CART	MEDIC II CART (NEW)	IN SHOP			
MIT49700	VALVE SPRING COMPRESSOR	1			
MIT6311	15" GAUGE BAR	5			
MIT991550	PUMP ADAPTER, 90 DEGREES	6			
MLR-8382	LEAK CHECK ADAPTER (1/4 TURN)	5			
MLR-9873	ASSEMBLY, PRESSURE GAUGE	7			
MLR-690A		IN SHOP			
MLR-6922		IN SHOP			
MZ203827-01	ENGINE SUPPORT BAR	IN SHOP			
MZ203827-A	BAR, ENGINE SUPPORT	IN SHOP			
MZ203827-B	BAR, ENGINE SUPPORT	IN SHOP			

Drawer Liner Reference

TOOLS

- MB990031-01 DRIVE PINION OIL SEAL INSTALLER
- MB990228-01 PRELOAD SOCKET
- MB990662-1-01 FITTING, COMPONENT OF MB990662-01
- MB990662-2-01 FITTING, COMPONENT OF MB990662-01
- MB990799-01 AXLE BEARING REMOVER/INSTALLER
- MB990938-01 HANDLE
- MB990941-01 TORQUE TUBE BEARING INSTALLER
- MB991168-01 DIFFERENTIAL SEAL INSTALLER
- MB992037-01 INPUT SHAFT OIL SEAL INSTALLER
- MB992038-01 PRELOAD SOCKET
- MB992039-01 SLIDE HAMMER PULLER
- MB992127-01 ADAPTER
- MB992138-01 BEARING INSTALLER
- MB992140-01 OIL SEAL INSTALLER
- MB992141-01 OIL SEAL INSTALLER
- MB992206-01 OIL SEAL INSTALLER
- MB992210-01 OIL SEAL INSTALLER
- MB992216-01 TRANSMISSION INSTALLER (5TH GEAR)
- MB992219-01 OUTPUT SHAFT ADAPTER
- MB992220-01 INPUT SHAFT ADAPTER
- MB992221-01 PULLER SET KIT
- MB992873-01 SEAL INSTALLER
- MD998323-01 BEARING INSTALLER
- MD998334-01 OIL PUMP OIL SEAL INSTALLER
- MD998802-01 INPUT SHAFT HOLDER
- MD998816-01 BEARING INSTALLER ADAPTER, 30MM
- MD998817-01 BEARING INSTALLER ADAPTER, 34MM
- MD998818-01 BEARING INSTALLER ADAPTER, 38MM
- MD998820-01 INSTALLER ADAPTER, 42MM
- MD998821-01 BEARING INSTALLER ADAPTER, 44MM
- MD998822-01 BEARING INSTALLER
- MD998824-01 BEARING INSTALLER ADAPTER, 50MM
- MD998829-01 BEARING INSTALLER
- MIT27526 DRIVE PLATE
- MIT27537 DRIVE PLATE

DRAWER 3

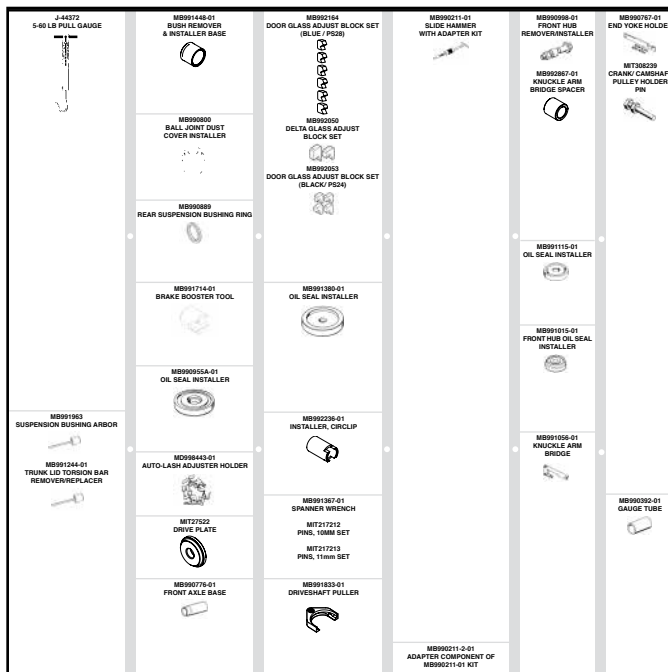


- MIT304180-A INSTALLER HANDLE
- MIT4336 BEARING DRIVER HANDLE
- MIT44802 COLLET SET
- MIT45287 COLLET SET

TOOLS

- J-44372 5-60 LB PULL GAUGE
- MB990211-01 SLIDE HAMMER WITH ADAPTER KIT
- MB990211-2-01 ADAPTER COMPONENT OF MB990211-01 KIT
- MB990392-01 GAUGE TUBE
- MB990767-01 END YOKE HOLDER
- MB990776-01 FRONT AXLE BASE
- MB990800 BALL JOINT DUST COVER INSTALLER
- MB990889 REAR SUSPENSION BUSHING RING
- MB990955A-01 OIL SEAL INSTALLER
- MB990998-01 FRONT HUB REMOVER/INSTALLER
- MB991015-01 FRONT HUB OIL SEAL INSTALLER
- MB991056-01 KNUCKLE ARM BRIDGE
- MB991115-01 OIL SEAL INSTALLER
- MB991244-01 TRUNK LID TORSION BAR REMOVER/REPLACER
- MB991367-01 SPANNER WRENCH
- MB991380-01 OIL SEAL INSTALLER
- MB991448-01 BUSH REMOVER & INSTALLER BASE
- MB991714-01 BRAKE BOOSTER TOOL
- MB991833-01 DRIVESHAFT PULLER
- MB991963 SUSPENSION BUSHING ARBOR
- MB991963 TRUNK LID TORSION BAR REMOVER/REPLACER
- MB992050 DELTA GLASS ADJUST BLOCK SET
- MB992053 DOOR GLASS ADJUST BLOCK SET (BLACK/ PS24)
- MB992164 DOOR GLASS ADJUST BLOCK SET (BLUE / PS28)
- MB992236-01 INSTALLER, CIRCLIP
- MB992867-01 KNUCKLE ARM BRIDGE SPACER
- MB998443-01 AUTO-LASH ADJUSTER HOLDER
- MIT217212 PINS, 10MM SET
- MIT217213 PINS, 11MM SET
- MIT27522 DRIVE PLATE
- MIT27522 DRIVE PLATE
- MIT308239 CRANK/CAMSHAFT PULLEY HOLDER PIN

DRAWER 4

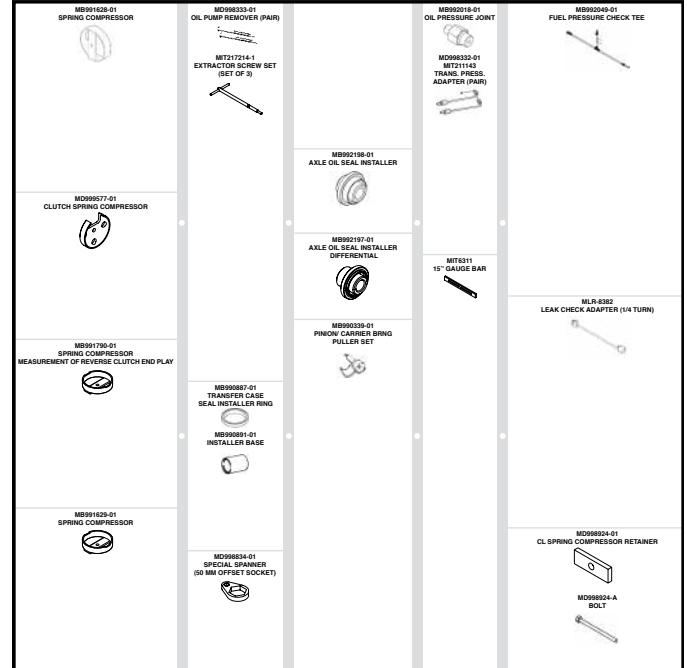


Drawer Liner Reference

TOOLS

- MB990339-01 PINION/ CARRIER BRNG PULLER SET
- MB990887-01 TRANSFER CASE SEAL INSTALLER RING
- MB990891-01 INSTALLER BASE
- MB991628-01 SPRING COMPRESSOR
- MB991629-01 SPRING COMPRESSOR
- MB991790-01 SPRING COMPRESSOR
- MB992018-01 - MEASUREMENT OF REVERSE CLUTCH END PLAY
- MB992049-01 OIL PRESSURE JOINT
- MB992197-01 FUEL PRESSURE CHECK TEE
- MB992198-01 AXLE OIL SEAL INSTALLER - DIFFERENTIAL
- MB992198-01 AXLE OIL SEAL INSTALLER
- MD998332-01 MIT211143 TRANS. PRESS. ADAPTER (PAIR)
- MD998333-01 OIL PUMP REMOVER (PAIR)
- MD998834-01 SPECIAL SPANNER (50 MM OFFSET SOCKET)
- MD998924-01 CL SPRING COMPRESSOR RETAINER
- MD998924-A BOLT
- MD999577-01 CLUTCH SPRING COMPRESSOR
- MIT217214-1 EXTRACTOR SCREW SET
- MIT6311 15" GAUGE BAR
- MLR-8382 LEAK CHECK ADAPTER (1/4 TURN)

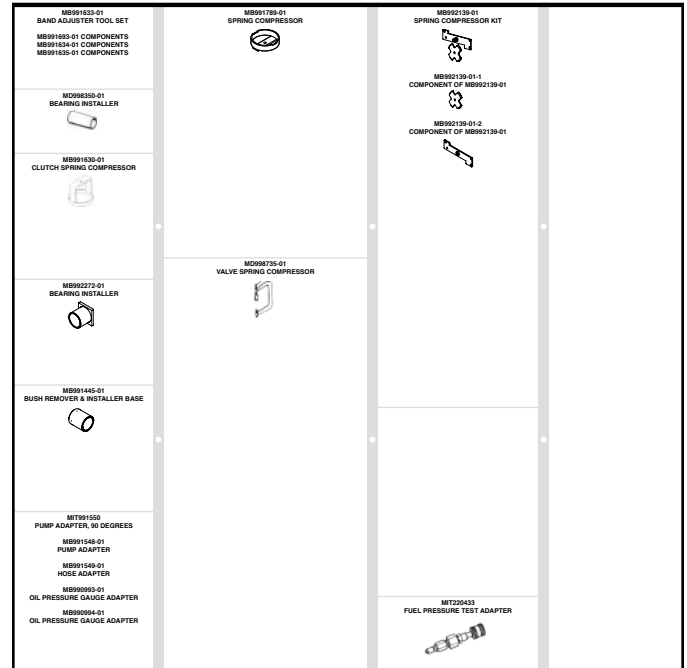
DRAWER 5



TOOLS

- MB990993-01 OIL PRESSURE GAUGE ADAPTER
- MB990994-01 OIL PRESSURE GAUGE ADAPTER
- MB991445-01 BUSH REMOVER & INSTALLER BASE
- MB991548-01 PUMP ADAPTER
- MB991549-01 HOSE ADAPTER
- MB991630-01 CLUTCH SPRING COMPRESSOR
- MB991633-01 BAND ADJUSTER TOOL SET
- MB991789-01 SPRING COMPRESSOR
- MB992139-01 SPRING COMPRESSOR KIT
- MB992139-01-1 COMPONENT OF MB992139-01
- MB992139-01-2 COMPONENT OF MB992139-01
- MB992272-01 BEARING INSTALLER
- MD998350-01 BEARING INSTALLER
- MD998735-01 VALVE SPRING COMPRESSOR
- MIT220433 FUEL PRESSURE TEST ADAPTER
- MIT991550 PUMP ADAPTER, 90 DEGREES

DRAWER 6



Drawer Liner Reference

TOOLS

- MB990662-01 OIL PRESSURE GAUGE KIT
- MB991631-01 CLEARANCE DUMMY PLATE
- MB991632-01 CLEARANCE DUMMY PLATE
- MB992195-01 SPRING COMPRESSOR
- MD998330-01 OIL PRESSURE GAUGE SET
- MIT210196 FUEL PRESSURE GAUGE
- MIT304253 PRESSURE GAUGE (COMPONENT OF MB998330-01)
- MIT305302 PRESSURE GAUGE (COMPONENT OF MB998330-01)
- MIT305303 PRESSURE GAUGE (COMPONENT OF MB998330-01)
- MLR-9873 ASSEMBLY, PRESSURE GAUGE

DRAWER 7

